

Elpida Hadzi-Vasileva
Silentio Pathologia



Silentio Pathologia

A multi part installation work:

1. **Preformed metal** (steel) curved sections forming the outer skin of the work:

1 x section of 2510 x 3000 mm of 123.3kg
10 x sections of 1910 x 3000 mm of 46.92kg each
3 x sections of 989 x 3000 mm of 47.48kg each
6 x sections of 1250 x 3000 mm of 61.44kg each

Total weight: 1,103.58kg

2. **Preformed metal** (steel) footings (allowing free standing of metal curved sections):

1 x base of 21.02kg
10 x bases of 16kg each
3 x bases of 16 kg each
6 x bases of 10.46kg each

Total weight: 291.78kg

3. **Silk cocoon curtain** 2.5m (highest point) x 30m

Hand formed curtain with silk worm cocoons stitched to form curtain.

4. **Black Silk curtain** 3m (highest point) x 50m (used doubled at 25m in Venice)

Manufactured silk curtain, distressed design.

5. **Rat Skin curtain** 2.5m (highest point) x 7.5m

6. **Hand skinned rat skins**, stitched together to form curtain.

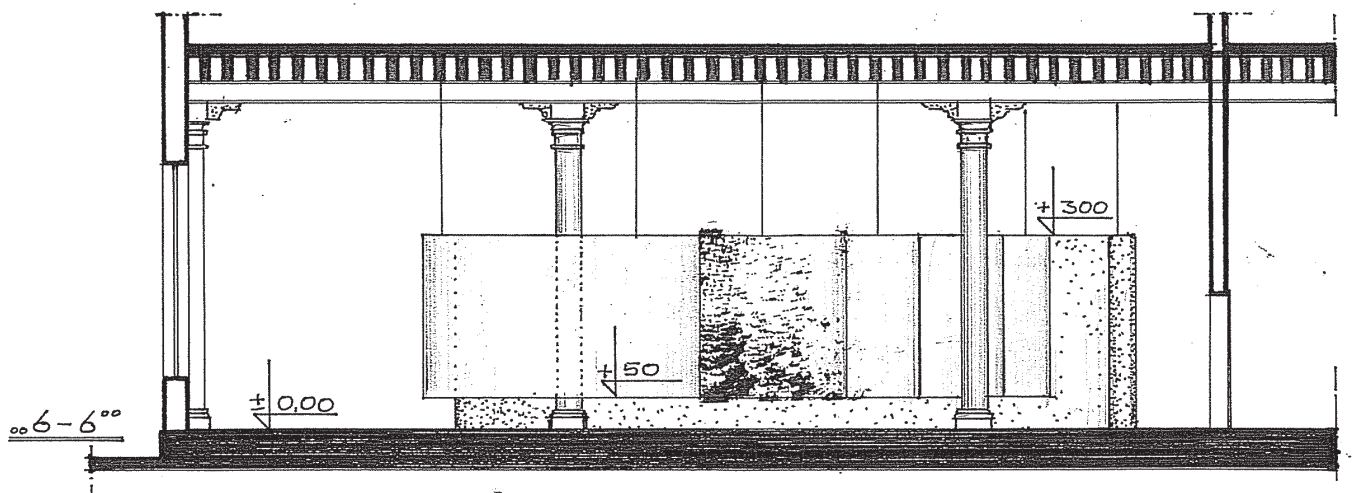
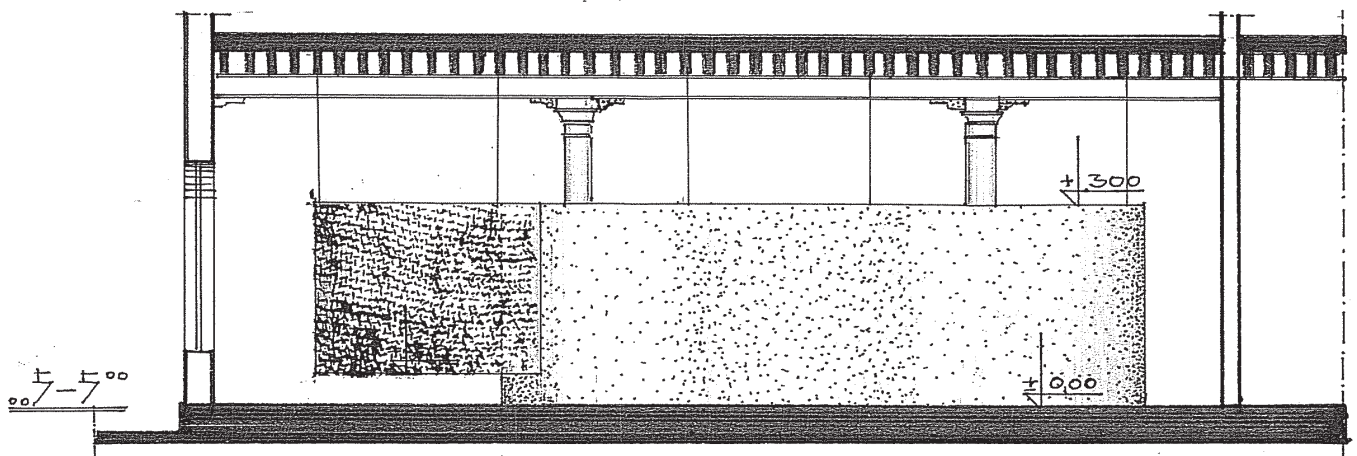
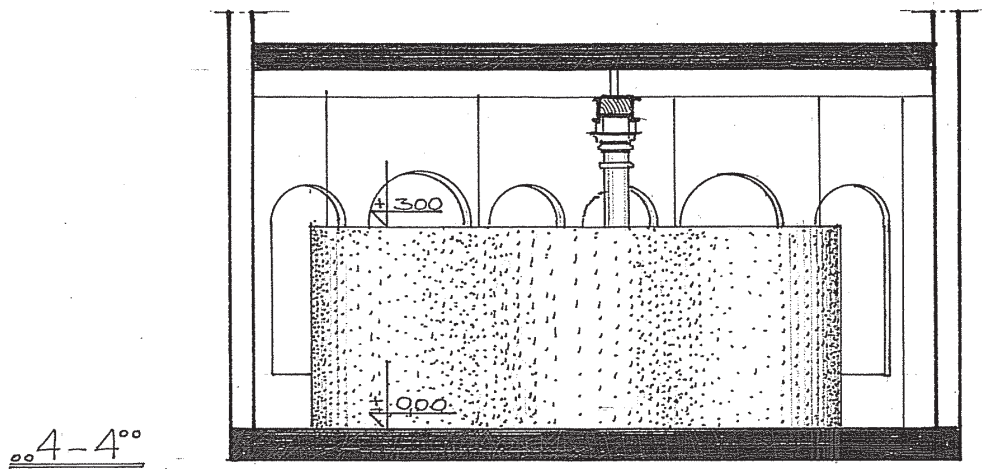
7. **8mm steel rod** (painted black) x 62.5m

8. **Bespoke rat cages (x2)**, 50cm diameter x 2m and live **Rats** (x 2 per cage)

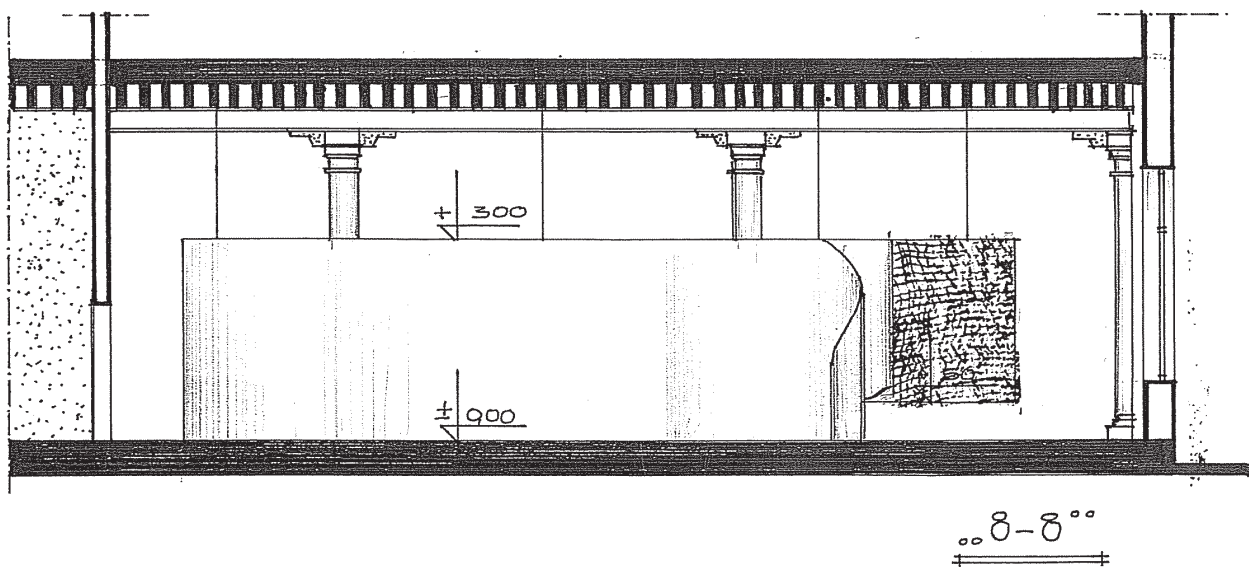
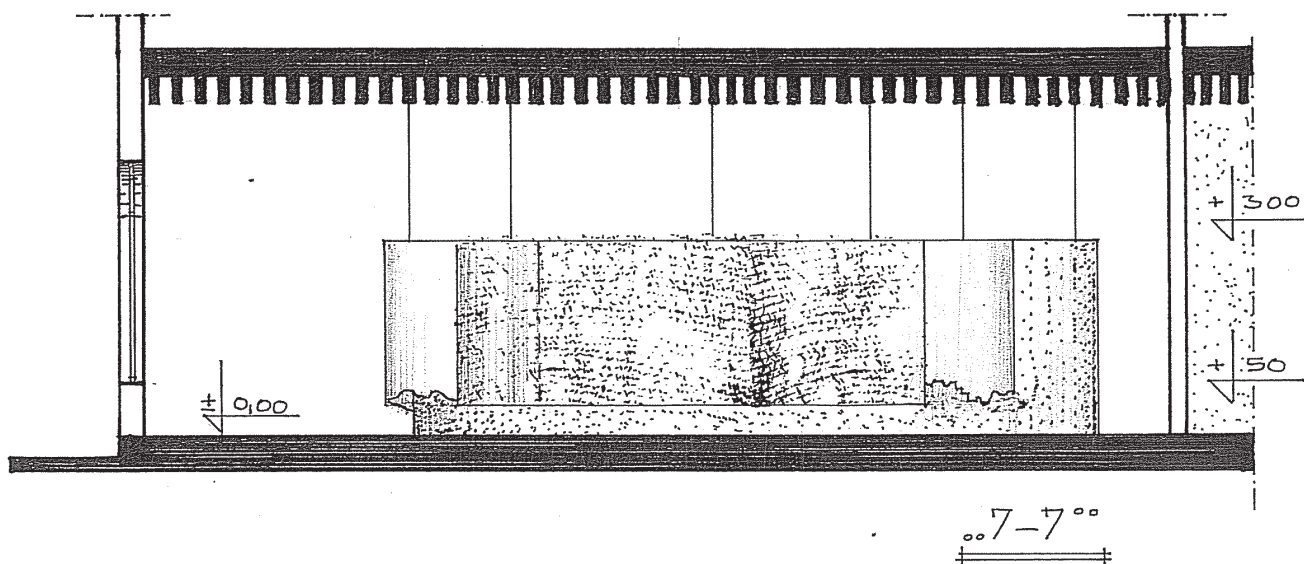
Ceiling fittings, high tensile fishing line and consumables (rivets etc.)



Silentio Pathologia, Installation, Scuola dei Laneri, Fondamenta del Gaffaro, Santa Croce 131, Venezia



1:100



1:100

Silentio Pathologia

Installation

Steel curved sections, mounted in footings to agreed plan (and riveted in place)

Steel curved sections riveted together (on vertical seam)

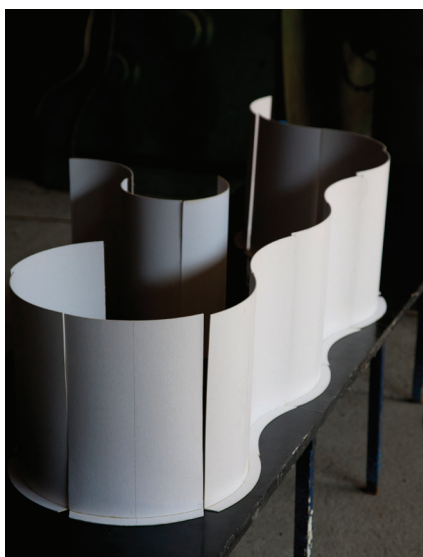
Additional top edge steel fittings riveted where applicable.

Ceiling fittings as required (see below)

8mm curved rod attached to ceiling (via high tensile fishing line) for curtain formers (hanger) at 3m height

Cocoon, silk and rat skin curtains hung from curved rod.

Note: specific ceiling fittings required for different locations, dependent upon ceiling design.



Silentio Pathologia, Installation, Scuola dei Laneri, Fondamenta del Gaffaro, Santa Croce 131, Venezia

Silentio Pathologia

Options

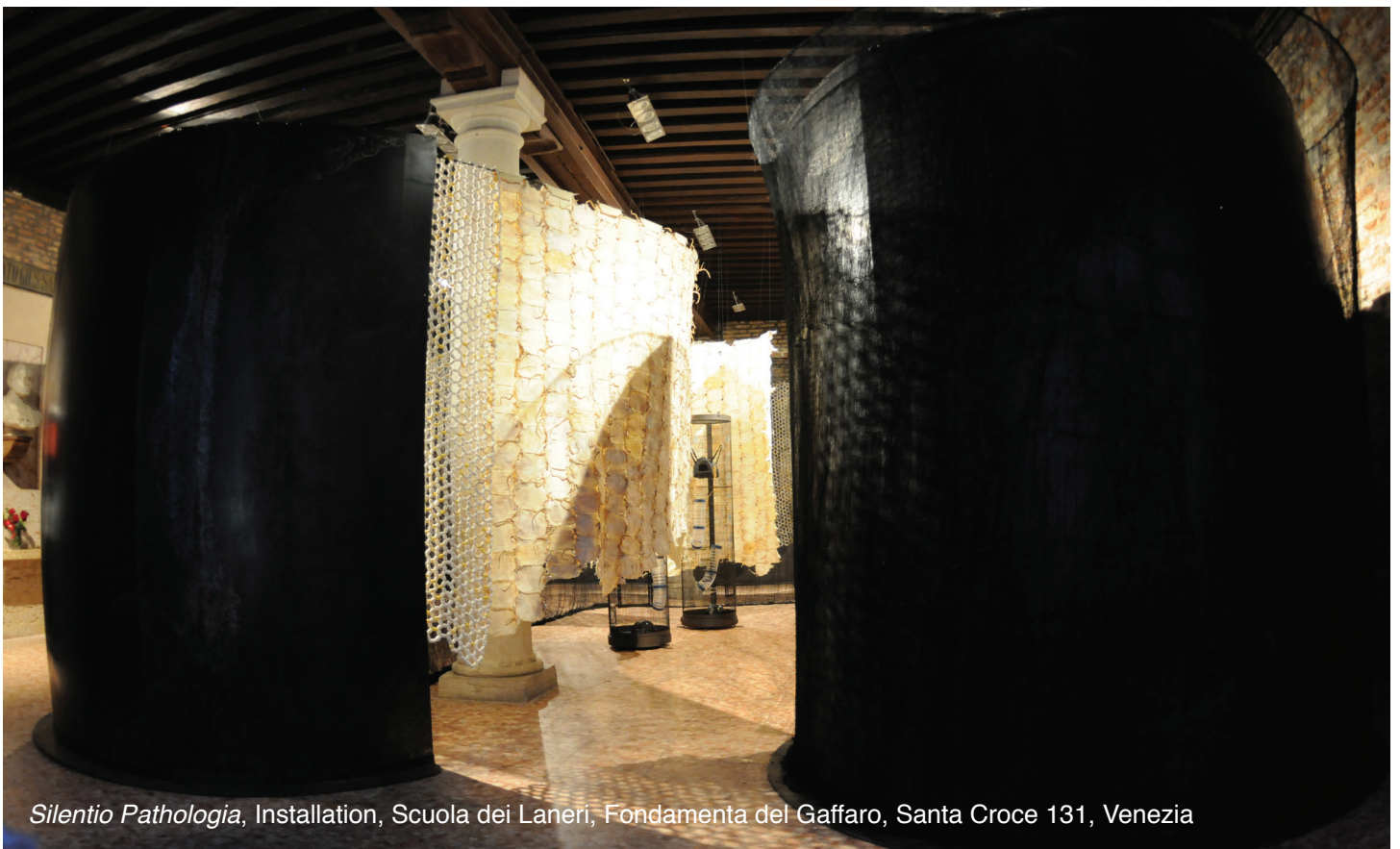
Silentio Pathologia was conceived and designed for a specific space.

The work is however, a modular piece and can be re-considered and redesigned for new locations.

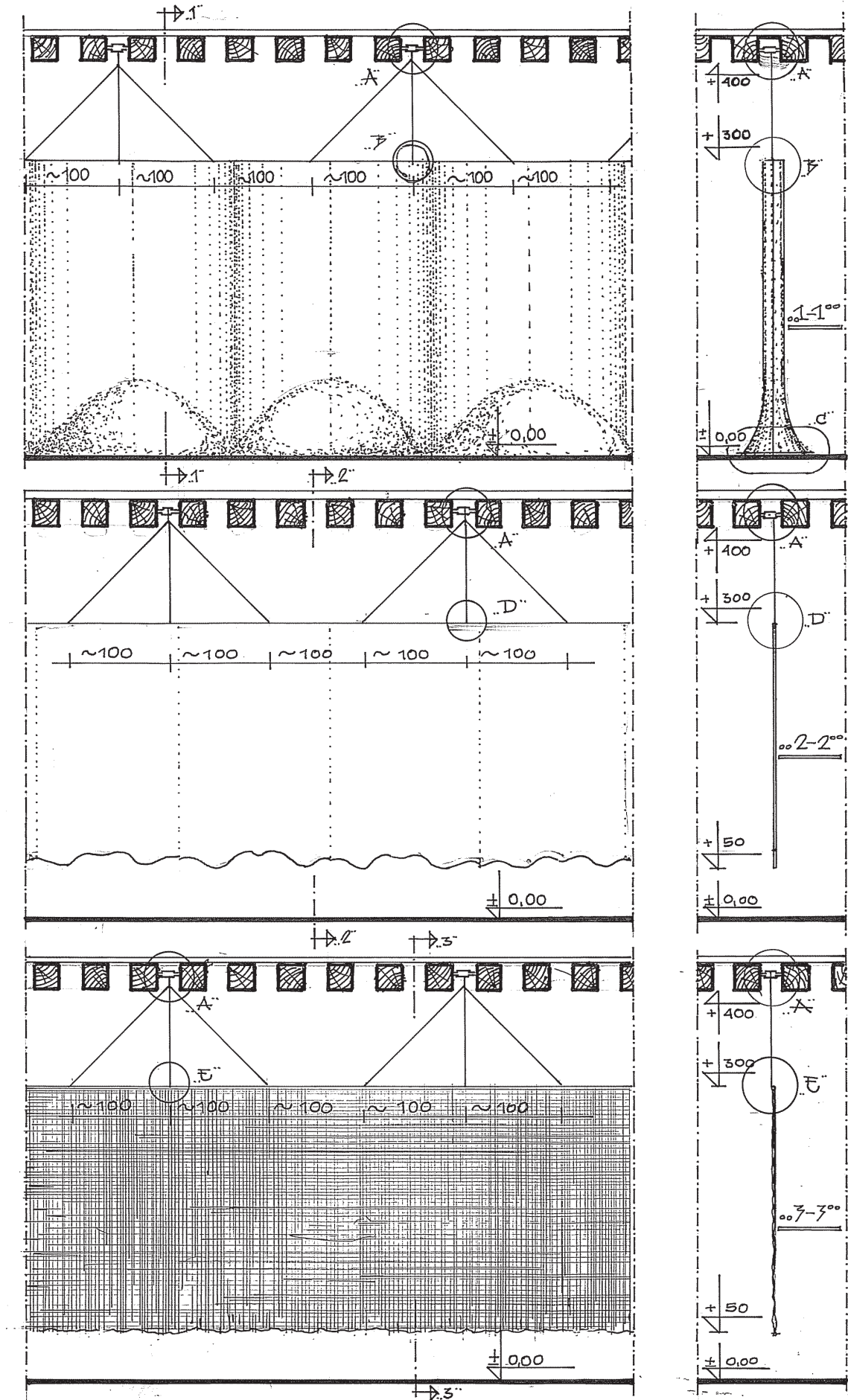
Smaller versions, utilizing as few as three or four sections can be realised, in collaboration with the artist.

Where required, the steel sections can be omitted from the installation, however this is not the artists preferred approach.

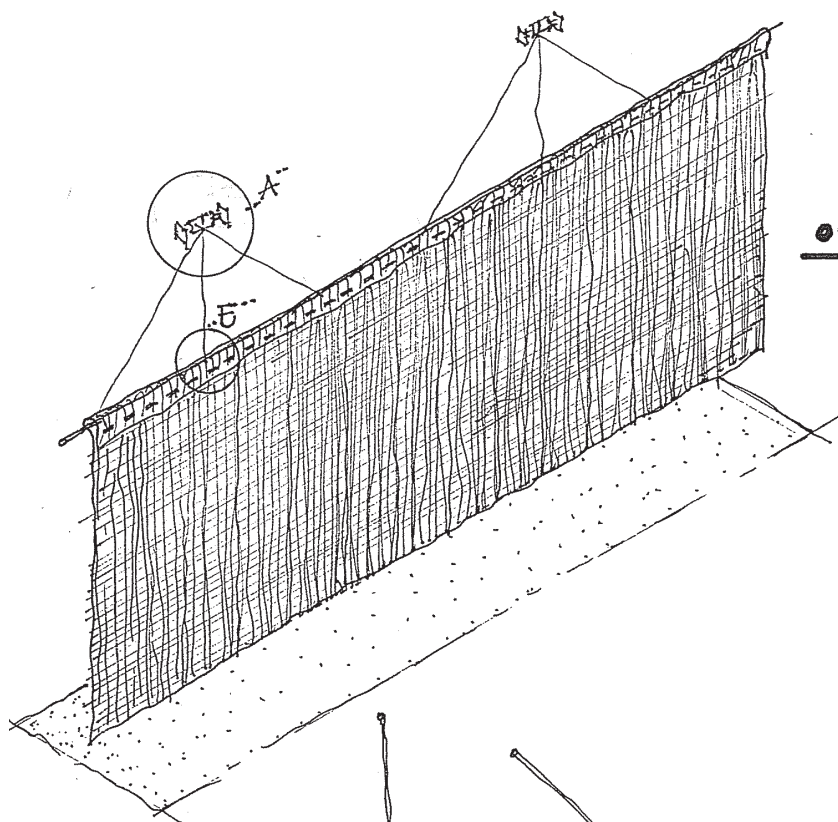
Live Rats: For the installation in Venice live rats occupied the cages for the preview week. Subject to curatorial preference, permissions and effective invigilation (which requires regular feeding, cleaning and playing with the rodents) the artist is very keen to encourage inhabiting the cages.



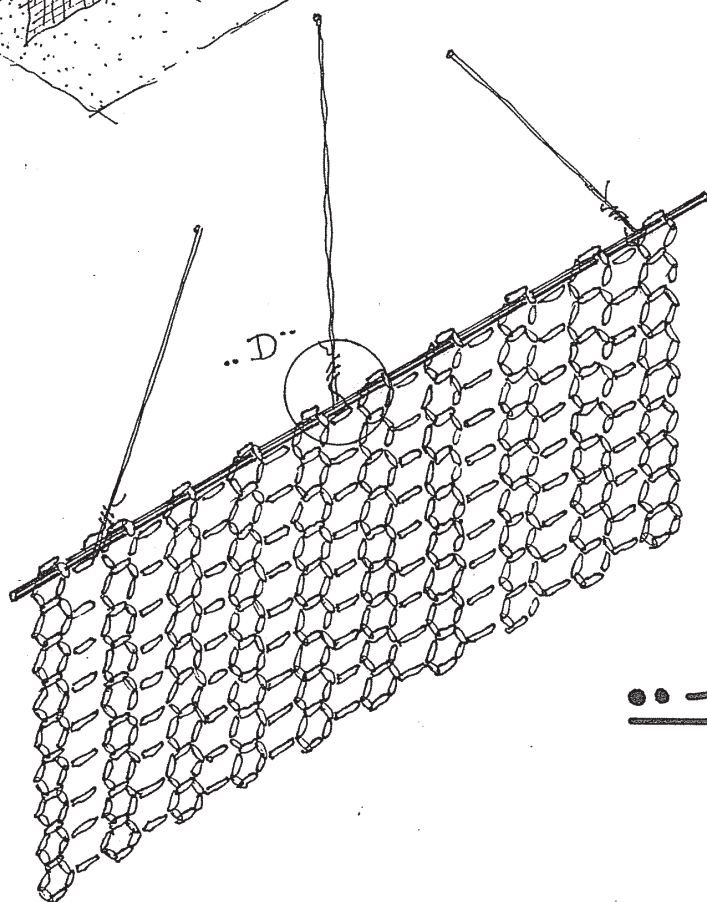
Silentio Pathologia, Installation, Scuola dei Laneri, Fondamenta del Gaffaro, Santa Croce 131, Venezia



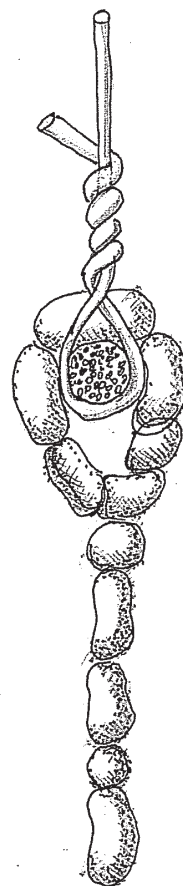
Silentio Pathologia, drawings (section), Scuola dei Laneri, top: silk curtain, middle cocoon curtain, bottom: rat skin curtain.



..E..



..D..



Silentio Pathologia, drawings, Scuola dei Laneri, top: 8mm rod and curtain, bottom: 8mm rod and cocoon curtain, right: hanging line with rod (section) and cocoon curtain



More information and artists blog:
www.silentiopathologia.com

Contact:
Gill Hedley: gill@gillhedley.net

Mark Segal: mark@theartistsagency.co.uk